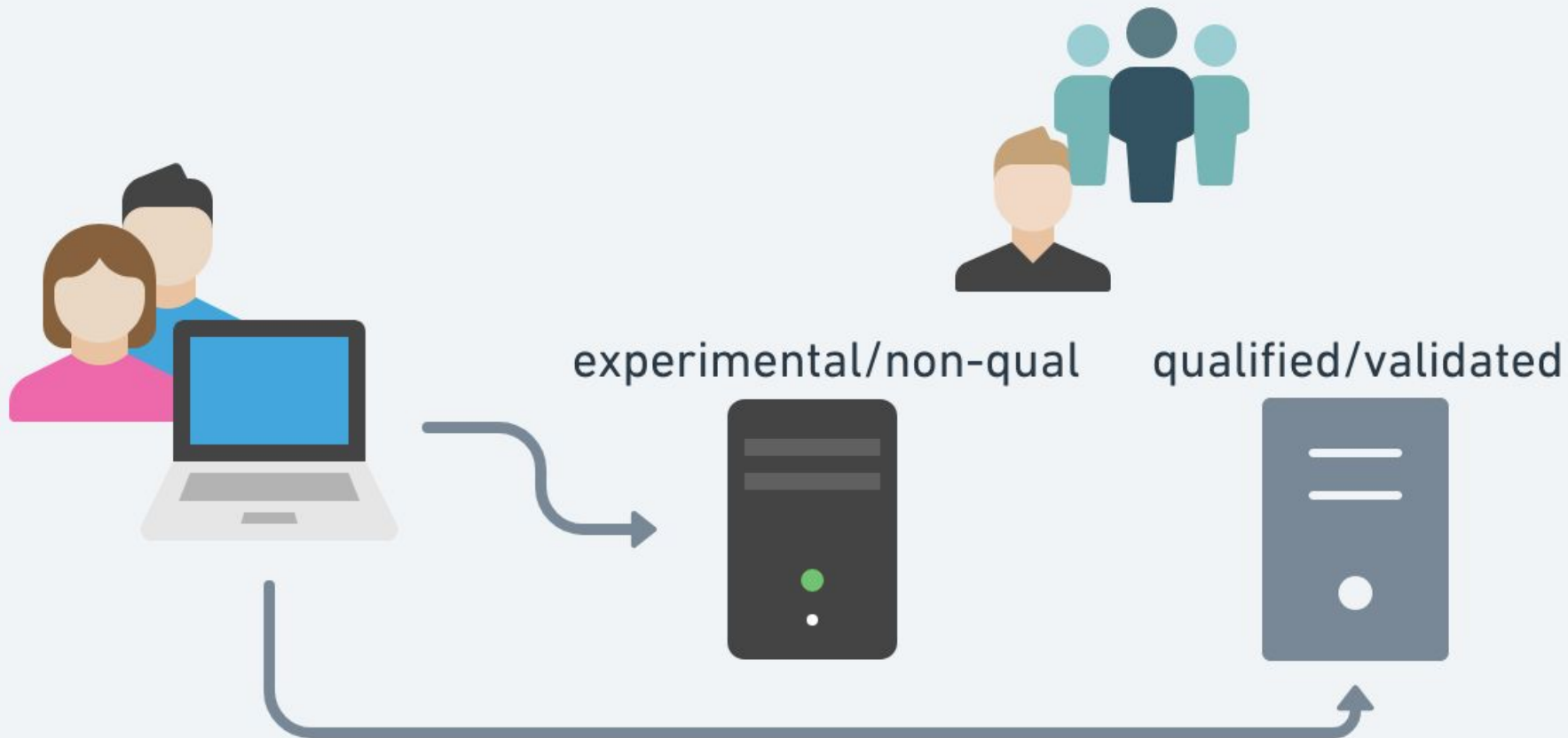


Moving Fast without Breaking Things

Devin Pastoor
Senior Director Engineering Services



Success



what people think
it looks like

Success

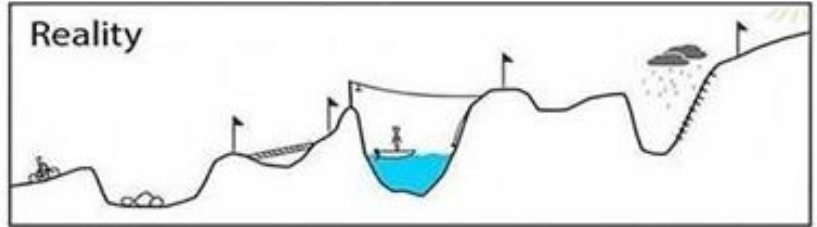


what it really
looks like

Your plan



Reality



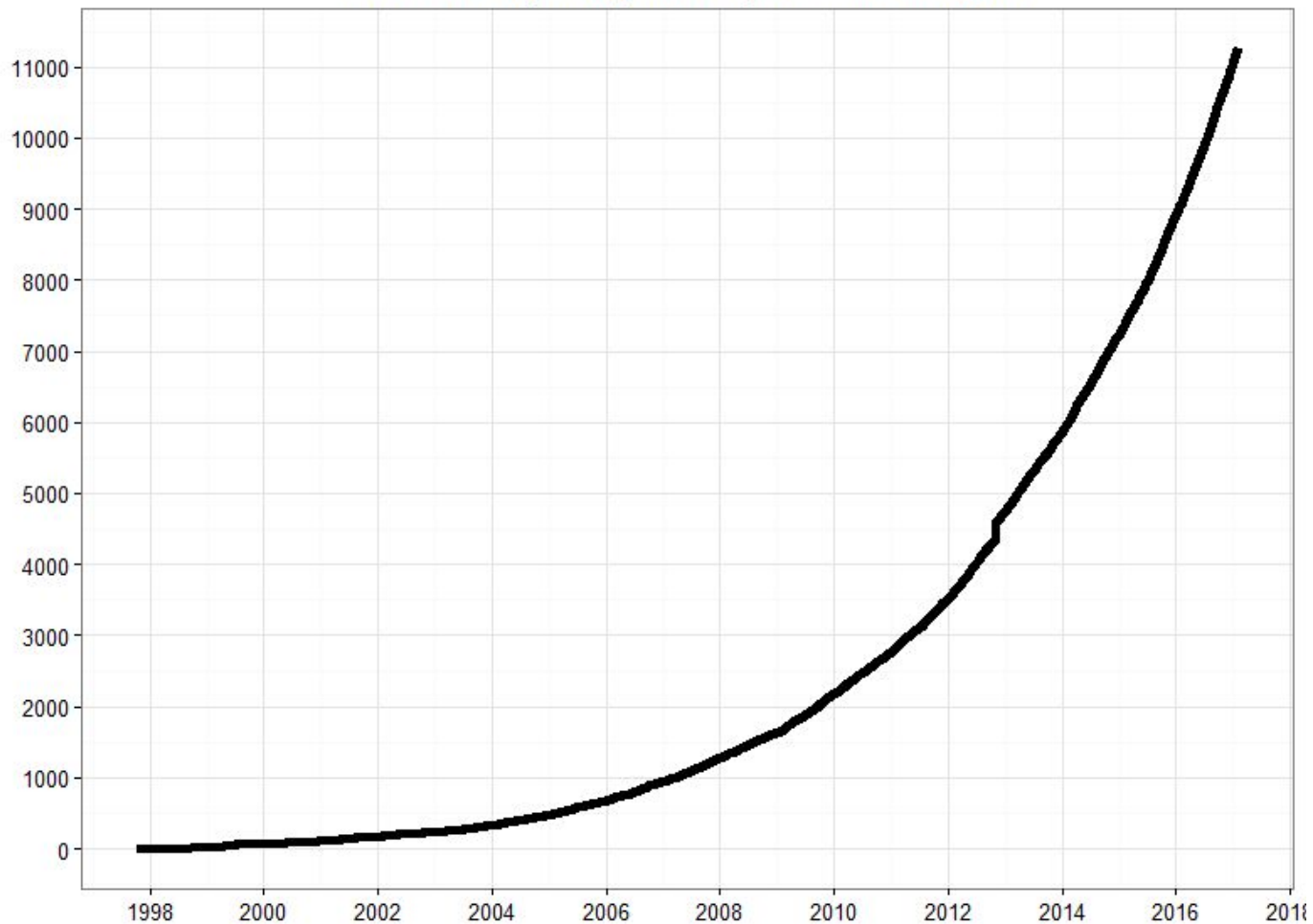
Many "validated" environments are inflexible, monolithic, and fall out of date rapidly

Moving ~~Fast~~ without
Breaking Things

How is the
R ecosystem
designed?



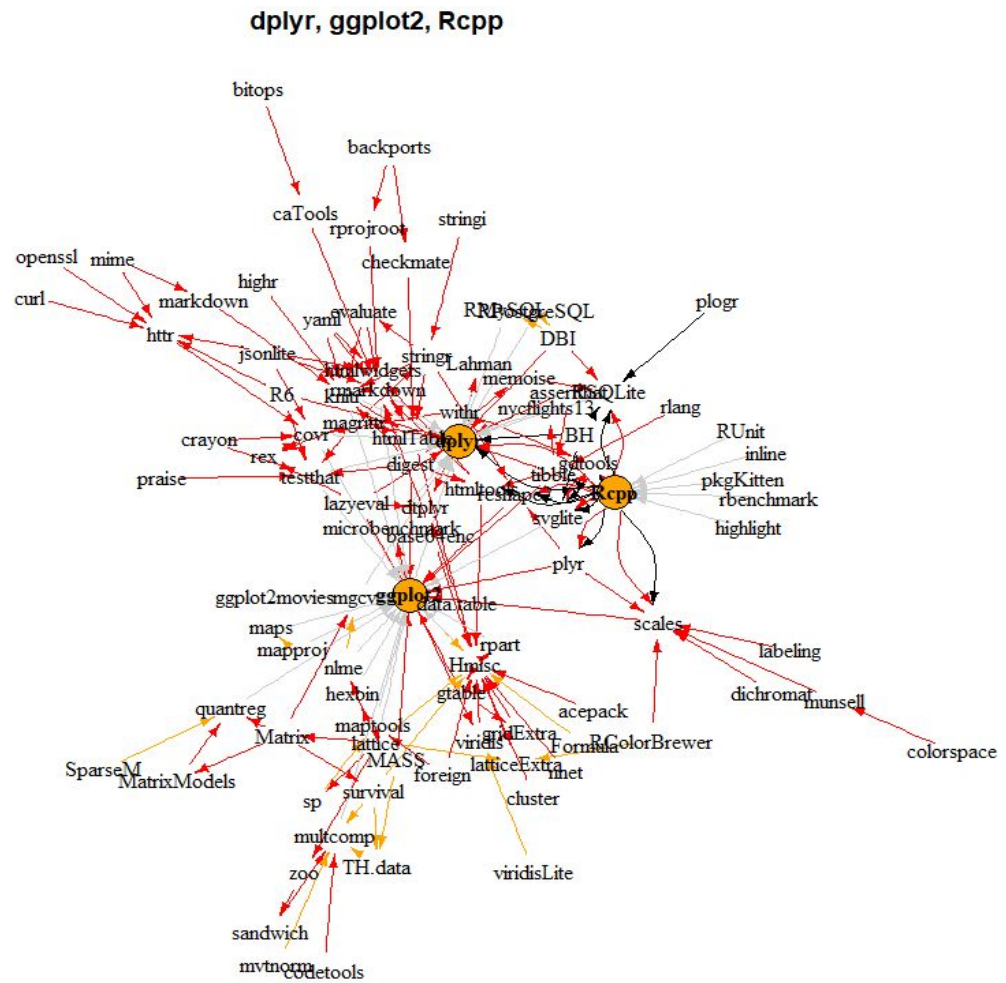
Number of R packages ever published on CRAN



Misconception #1

Packages are isolated entities

Packages are interwoven



Description: A fast, consistent tool for working with data frame like objects,
both in memory and out of memory.

License: MIT + file LICENSE

URL: <http://dplyr.tidyverse.org>, <https://github.com/tidyverse/dplyr>

BugReports: <https://github.com/tidyverse/dplyr/issues>

Depends:

R (>= 3.1.2)

Imports:

assertthat (>= 0.2.0),
bindrcpp (>= 0.2.0.9000),
glue (>= 1.1.1),
magrittr (>= 1.5),
methods,
pkgconfig (>= 2.0.1),
R6 (>= 2.2.2),
Rcpp (>= 0.12.18),
rlang (>= 0.2.1),
tibble (>= 1.3.1),
tidyselect (>= 0.2.3),
utils

Suggests:

bit64 (>= 0.9.7),
callr,
covr (>= 3.0.1),
DBI (>= 0.7.14),

DESCRIPTION

- Depends – **required** + loaded
- Imports – **required**
- Suggests – optional for some funcs
- LinkingTo – **required** (usually c++ related)
- SystemRequirements – **required**

Packages can have system dependencies

GitHub, Inc. [US] | <https://github.com/r-spatial/sf/blob/master/DESCRIPTION#L61>

```
58         rmarkdown
59   LinkingTo: Rcpp
60   VignetteBuilder: knitr
61   SystemRequirements: C++11, GDAL (>= 2.0.1), GEOS (>= 3.4.0), PROJ (>= 4.8.0)
62   License: GPL-2 | MIT + file LICENSE
63   URL: https://github.com/r-spatial/sf/
```

how to install them is NOT communicated in the DESCRIPTION file

Takeaway #1

Think of the surface area change when adding/changing package(s)

github.com/<org>/<repo>/compare/<start>...<end>

github.com/tidyverse/dplyr/compare/v0.7.4...v0.7.6

```
15 BugReports: https://github.com/tidyverse/dplyr/issues
16 - Encoding: UTF-8
17 - Depends:
18   R (>= 3.1.2)
19 - Imports:
20 -   assertthat,
21 -   bindrcpp (>= 0.2),
22 -   glue (>= 1.1.1),
23 -   magrittr,
24 -   methods,
25 -   pkgconfig,
26 -   Rlang (>= 0.3.2),
27 -   R6,
28 -   Rcpp (>= 0.12.7),
29 -   tibble (>= 1.3.1),
30 -   utils
31 - Suggests:
32 -   bit64,
33 -   covr,
34 -   dbplyr,
35 -   dtplyr,
36 -   DBI,
37 -   ggplot2,
38 -   hms,
39 -   knitr,
40 -   Lahman (>= 3.0-1),
41 -   mgcv,
42 -   microbenchmark,
43 -   nycflights13,
44 -   rmarkdown,
45 -   RMySQL,
46 -   RPostgreSQL,
47 -   RSQLite,
48 -   testthat,
49 -   withr
50 - VignetteBuilder: knitr
51 - LinkingTo: Rcpp (>= 0.12.0),
52
53
54
55
56
57
58
59
60
61
62
63
64
65
66
67
68
69
70
71
72
73
74
75
76
77
78
79
80
81
82
83
84
85
86
87
88
89
90
91
92
93
94
95
96
97
98
99
100
101
102
103
104
105
106
107
108
109
110
111
112
113
114
115
116
117
118
119
120
121
122
123
124
125
126
127
128
129
130
131
132
133
134
135
136
137
138
139
140
141
142
143
144
145
146
147
148
149
150
151
152
153
154
155
156
157
158
159
160
161
162
163
164
165
166
167
168
169
170
171
172
173
174
175
176
177
178
179
180
181
182
183
184
185
186
187
188
189
190
191
192
193
194
195
196
197
198
199
200
201
202
203
204
205
206
207
208
209
210
211
212
213
214
215
216
217
218
219
220
221
222
223
224
225
226
227
228
229
230
231
232
233
234
235
236
237
238
239
240
241
242
243
244
245
246
247
248
249
250
251
252
253
254
255
256
257
258
259
260
261
262
263
264
265
266
267
268
269
270
271
272
273
274
275
276
277
278
279
280
281
282
283
284
285
286
287
288
289
290
291
292
293
294
295
296
297
298
299
300
301
302
303
304
305
306
307
308
309
310
311
312
313
314
315
316
317
318
319
320
321
322
323
324
325
326
327
328
329
330
331
332
333
334
335
336
337
338
339
340
341
342
343
344
345
346
347
348
349
350
351
352
353
354
355
356
357
358
359
360
361
362
363
364
365
366
367
368
369
370
371
372
373
374
375
376
377
378
379
380
381
382
383
384
385
386
387
388
389
390
391
392
393
394
395
396
397
398
399
400
401
402
403
404
405
406
407
408
409
410
411
412
413
414
415
416
417
418
419
420
421
422
423
424
425
426
427
428
429
430
431
432
433
434
435
436
437
438
439
440
441
442
443
444
445
446
447
448
449
450
451
452
453
454
455
456
457
458
459
460
461
462
463
464
465
466
467
468
469
470
471
472
473
474
475
476
477
478
479
480
481
482
483
484
485
486
487
488
489
490
491
492
493
494
495
496
497
498
499
500
501
502
503
504
505
506
507
508
509
510
511
512
513
514
515
516
517
518
519
520
521
522
523
524
525
526
527
528
529
530
531
532
533
534
535
536
537
538
539
540
541
542
543
544
545
546
547
548
549
550
551
552
553
554
555
556
557
558
559
560
561
562
563
564
565
566
567
568
569
570
571
572
573
574
575
576
577
578
579
580
581
582
583
584
585
586
587
588
589
590
591
592
593
594
595
596
597
598
599
600
601
602
603
604
605
606
607
608
609
610
611
612
613
614
615
616
617
618
619
620
621
622
623
624
625
626
627
628
629
630
631
632
633
634
635
636
637
638
639
640
641
642
643
644
645
646
647
648
649
650
651
652
653
654
655
656
657
658
659
660
661
662
663
664
665
666
667
668
669
670
671
672
673
674
675
676
677
678
679
680
681
682
683
684
685
686
687
688
689
690
691
692
693
694
695
696
697
698
699
700
701
702
703
704
705
706
707
708
709
710
711
712
713
714
715
716
717
718
719
720
721
722
723
724
725
726
727
728
729
730
731
732
733
734
735
736
737
738
739
740
741
742
743
744
745
746
747
748
749
750
751
752
753
754
755
756
757
758
759
760
761
762
763
764
765
766
767
768
769
770
771
772
773
774
775
776
777
778
779
780
781
782
783
784
785
786
787
788
789
790
791
792
793
794
795
796
797
798
799
800
801
802
803
804
805
806
807
808
809
810
811
812
813
814
815
816
817
818
819
820
821
822
823
824
825
826
827
828
829
830
831
832
833
834
835
836
837
838
839
840
841
842
843
844
845
846
847
848
849
850
851
852
853
854
855
856
857
858
859
860
861
862
863
864
865
866
867
868
869
870
871
872
873
874
875
876
877
878
879
880
881
882
883
884
885
886
887
888
889
890
891
892
893
894
895
896
897
898
899
900
901
902
903
904
905
906
907
908
909
910
911
912
913
914
915
916
917
918
919
920
921
922
923
924
925
926
927
928
929
930
931
932
933
934
935
936
937
938
939
940
941
942
943
944
945
946
947
948
949
950
951
952
953
954
955
956
957
958
959
960
961
962
963
964
965
966
967
968
969
970
971
972
973
974
975
976
977
978
979
980
981
982
983
984
985
986
987
988
989
990
991
992
993
994
995
996
997
998
999
1000
```

tools::packageDependencies()
r-lib/desc

Misconception #2

Packages on CRAN all work together

```
✓ checking for left-over files
✓ checking index information
✓ checking package subdirectories ...
✓ checking R files for non-ASCII characters ...
✓ checking R files for syntax errors ...
✓ checking whether the package can be loaded ...
✓ checking whether the package can be loaded with stated dependencies ...
✓ checking whether the package can be unloaded cleanly ...
✓ checking whether the namespace can be loaded with stated dependencies ...
✓ checking whether the namespace can be unloaded cleanly ...
✓ checking loading without being on the library search path ...
✓ checking dependencies in R code ...
✓ checking S3 generic/method consistency (623ms)
✓ checking replacement functions ... }
✓ checking foreign function calls ...
✓ checking R code for possible problems (1.8s)
✓ checking Rd files ...
✓ checking Rd metadata ...
✓ checking Rd cross-references ...
✓ checking for missing documentation entries ...
✓ checking for code/documentation mismatches (459ms)
✓ checking Rd \usage sections (792ms)
✓ checking Rd contents ...
✓ checking for unstated dependencies in examples ...
✓ checking line endings in C/C++/Fortran sources/headers
✓ checking line endings in Makefiles
✓ checking compilation flags in Makevars ...
✓ checking for GNU extensions in Makefiles
✓ checking for portable use of $(BLAS_LIBS) and $(LAPACK_LIBS)
✓ checking compiled code ...
✓ checking examples (490ms)
✓ checking for unstated dependencies in 'tests' ...
- checking tests ...
✓ Running 'testthat.R'
- checking PDF version of manual ...
```

CRAN Package Check Results for Package [dplyr](#)

Last updated on 2018-08-15 15:46:57 CEST.

Flavor	Version	T_{install}	T_{check}	T_{total}	Status	Flags
r-devel-linux-x86_64-debian-clang	0.7.6	316.61	124.08	440.69	OK	
r-devel-linux-x86_64-debian-gcc	0.7.6	307.18	96.59	403.77	OK	
r-devel-linux-x86_64-fedora-clang	0.7.6			640.96	NOTE	
r-devel-linux-x86_64-fedora-gcc	0.7.6			637.13	NOTE	
r-devel-windows-ix86+x86_64	0.7.6	588.00	217.00	805.00	NOTE	
r-patched-linux-x86_64	0.7.6	358.81	114.24	473.05	OK	
r-patched-solaris-x86	0.7.6			546.80	NOTE	
r-release-linux-x86_64	0.7.6	363.78	113.02	476.80	OK	
r-release-windows-ix86+x86_64	0.7.6	619.00	242.00	861.00	NOTE	
r-release-osx-x86_64	0.7.6				NOTE	
r-oldrel-windows-ix86+x86_64	0.7.6	819.00	286.00	1105.00	NOTE	
r-oldrel-osx-x86_64	0.7.6				NOTE	

Reverse depends: [braQCA](#), [censusr](#), [chunked](#), [crplyr](#), [dggridR](#), [dplyr.teradata](#), [efreadr](#), [egor](#), [EpiCurve](#), [EpiStats](#), [etl](#), [eyetrackingR](#), [flatr](#), [GADMTools](#), [geotoolsR](#), [ggcmcmc](#), [ggraptR](#), [implyr](#), [kerasformula](#), [manifestoR](#), [merTools](#), [mreadR](#), [mosaic](#), [mosaicModel](#), [msjgdr](#), [nitrcbo](#), [nlshelp](#), [norris](#), [PogromcyDanych](#), [poplite](#), [prodest](#), [PWFSLSmoke](#), [quickpsys](#), [radiant.data](#), [recipes](#), [reinsureR](#), [rmdHelpers](#), [sdStaf](#), [SEERaBomb](#), [sergeant](#), [sfc](#), [sourceR](#), [spdplyr](#), [staRdom](#), [stranger](#), [summeriser](#), [surveybootstrap](#), [tcr](#), [TeachBayes](#), [toolmaRk](#), [treeplyr](#), [turfr](#), [VWPRe](#)

Reverse imports: [abjutilis](#), [ACDm](#), [ActisoftrR](#), [actogrammr](#), [adapalint](#), [adegenet](#), [adjustedcranlogs](#), [admixturegraph](#), [ADMMsigma](#), [ADPclust](#), [aemo](#), [afmToolkit](#), [AGread](#), [AIG](#), [aire.zmvvm](#), [alakazam](#), [alfred](#), [alphabet](#), [alphavantager](#), [AmesHousing](#), [AMR](#), [amt](#), [anchoredDistr](#), [AnglerCreeSurveySimulation](#), [anomalize](#), [anomalyDetection](#), [anyflights](#), [apa](#), [apaTables](#), [apaText](#), [ARTool](#), [assertr](#), [atlantids](#), [auc2estr](#), [augmentedRCBD](#), [auk](#), [automagic](#), [AutoModel](#), [aws.alexia](#), [BALCONY](#), [ballr](#), [BANEScarparkinglite](#), [banR](#), [banter](#), [baseballDBR](#), [basictabler](#), [BatchGetSymbols](#), [BAWiR](#), [bayesammi](#), [bayesplot](#), [baystability](#), [bedpexpr](#), [benthos](#), [BETS](#), [bib2df](#), [binneR](#), [binomen](#), [Bioi](#), [bioinactivation](#), [biomartr](#), [bioOED](#), [bioset](#), [BIS](#), [bjscraper](#), [bkmr](#), [blastula](#), [blkbox](#), [blorr](#), [blscraperR](#), [BMSC](#), [bomrang](#), [bootnet](#), [boxr](#), [BradleyTerryScalable](#), [BrailleR](#), [brazilmaps](#), [breathtestscore](#), [breathteststan](#), [broom](#), [bsam](#), [bulletr](#), [bupaR](#), [c3](#), [caffsim](#), [cancensus](#), [CARBasesST](#), [carpenter](#), [CaseBasedReasoning](#), [catcon](#), [catlearn](#), [cattomun](#), [CausalImpact](#), [cbar](#), [cdfvisualise](#), [CDECRetrieve](#), [cepR](#), [CGPfunctions](#), [childser](#), [childhoodmortality](#), [childsds](#), [chromolextr](#), [chorrds](#), [chromer](#), [circumplex](#), [ciTools](#), [CityWaterBalance](#), [civis](#), [cleanNLP](#), [clustRcompaR](#), [clustrd](#), [clustree](#), [coalitions](#), [cocktailApp](#), [codebook](#), [coefplot](#), [cofeatureR](#), [CollapsABEL](#), [CollapseLevels](#), [colorednoise](#), [ChromExactTest](#), [compareDF](#), [comperank](#), [comperes](#), [concaveman](#), [condformat](#), [congressbr](#), [Conigrave](#), [coopProductGame](#), [coreSim](#), [corr](#), [Countr](#), [countyfloods](#), [countymeasures](#), [countyweather](#), [covTestR](#), [coxed](#), [cpr](#), [cr17](#), [CRANsearcher](#), [crawl](#), [cRegulome](#), [crickeer](#), [cromwellDashboard](#), [CrossClustering](#), [crosswalkr](#), [crossword.r](#), [CRPCLustering](#), [crsr](#), [crypto](#), [cutpointr](#), [CVglyco](#), [cytominer](#), [d3r](#), [d3Tree](#), [dat](#), [DataCombine](#), [dataCompareR](#), [datadogr](#), [datadr](#), [dataMeta](#), [dataRetrieval](#), [datestepr](#), [datasus](#), [dbfaker](#), [dbplot](#), [dbplyr](#), [ddpccr](#), [DecisionAnalysis](#), [DeLorean](#), [dendroTools](#), [denovolyzeR](#), [DescriptiveStatsOBeu](#), [descriptr](#), [desctable](#), [detrnder](#), [dexter](#), [dextergui](#), [dexterMST](#), [DiagrammeR](#), [dials](#), [diceR](#), [didrooRFM](#), [diffprojects](#), [diffprojectswidgt](#), [discord](#), [DisimForMixed](#), [Dislmpact](#), [dissever](#), [disio](#), [distr](#), [DiversityOccupancy](#), [dkanr](#), [DL.MTool](#), [dlookr](#), [dMof](#), [dmutate](#), [DMwR2](#), [doBy](#), [doxtools](#), [doxctract](#), [dotwhisker](#), [drake](#), [driftR](#), [DSAIDE](#), [DSAIRM](#), [dsr](#), [dplyr](#), [dtwclust](#), [dynfrail](#), [dynutlis](#), [eAnalytics](#), [easyformatr](#), [echor](#), [ecoenigene](#), [econet](#), [eda4treeR](#), [edeR](#), [eechidna](#), [eemR](#), [eesim](#), [EFDR](#), [electionsBR](#), [electoral](#), [emil](#), [emuR](#), [engsoccerdata](#), [epicontacts](#), [epidata](#), [episheet](#), [epubr](#), [ERSA](#), [esc](#), [estatapi](#), [ESTER](#), [ether](#), [europemcmc](#), [eurostat](#), [evaluator](#), [EventStudy](#), [exifr](#), [ExPanDaR](#), [explor](#), [extdplyr](#), [exuber](#), [ezec](#), [ezsummary](#), [facerec](#), [factorMerger](#), [fastLink](#), [fastqcr](#), [fastR2](#), [fbar](#), [febr](#), [FedData](#), [fedregs](#), [feeder](#), [finalfit](#), [fingerpscharts](#), [fingertipsR](#), [finreportr](#), [fitter](#), [flora](#), [ForecastFramework](#), [forestControl](#), [forestModel](#), [forestr](#), [frequencies](#), [freqweights](#), [FRK](#), [FSA](#), [ftfDK](#), [funModeling](#), [funrar](#), [futureheatwaves](#), [fuzzyjoin](#), [gaiiah](#), [gastemp](#), [gbfs](#), [gdms](#), [genBaRcode](#), [gender](#), [genderBR](#), [genogeoographer](#), [GenomicMating](#), [geomnet](#), [geoparser](#), [geoSpectral](#), [Germinar](#), [getCRUCLData](#), [GetDFPDData](#), [GetHFData](#), [GetTRData](#), [GetLData](#), [getTBinR](#), [GFE](#), [getTRData](#), [ggdistrib](#), [ggdistribute](#), [ggedit](#), [gffects](#), [gfgan](#), [gfgocus](#), [gforce](#), [gfortify](#), [gguitar](#), [gghighlight](#), [ggraphExtra](#), [gglogo](#), [ggmosaic](#), [ggmuller](#), [ggpage](#), [ggplotAssist](#), [ggpmisc](#), [ggplot](#), [ggpubr](#), [ggQC](#), [ggQQuinif](#), [ggquickeda](#), [ggquiver](#), [ggraph](#), [ggsum](#), [ggspcra](#), [ggstatsplot](#), [ggvis](#), [gibble](#), [giphyr](#), [gisr](#), [gitgadget](#), [gitlabr](#), [glmfields](#), [glycanr](#), [goldi](#), [googleAnalyticsR](#), [googlenlp](#), [googlesheets](#), [GRANBase](#), [graphicalVAR](#), [graphTweets](#), [groupdata2](#), [groupedstats](#), [GSDOR](#), [gunsales](#), [gutenbergr](#), [gvCR](#), [gwedgree](#), [hansard](#), [happybirtHday](#), [harriet](#), [healthcare4](#), [heatmapR](#), [heemod](#), [highchartr](#), [HMMOce](#), [homologene](#), [hipR](#), [HTSSIP](#), [HURDAt](#), [hurricaneexposure](#), [HydeIN](#), [hydrolinks](#), [hypothesisr](#), [iaidf](#), [IAT](#), [IATscores](#), [idbr](#), [IDE](#), [idealstat](#), [idefix](#), [imaginatior](#), [imdbapi](#), [imfr](#), [IMP](#), [imputeTestbench](#), [incadata](#), [incgraph](#), [inCR](#), [inctools](#), [IncucyteDRC](#), [INdPerform](#), [infer](#), [infer](#), [influxDR](#), [InformativeCensoring](#), [InjurySeverityScore](#), [inlmisc](#), [internetarchive](#), [interplot](#), [iotables](#), [ipeaData](#), [ipft](#), [ipumrs](#), [iRE](#), [IRISMustangMetrics](#), [ITN](#), [jaccard](#), [janitor](#), [jnpdistrictr](#), [jsonstat](#), [jstor](#), [kendallRandomWalks](#), [keyholder](#), [kntnr](#), [kokodsuochi](#), [konfound](#), [KraljicMatrix](#), [labelled](#), [LAGOSNE](#), [Lahman](#), [laketemes](#), [landscapemetrics](#), [landscapetools](#), [lans2R](#), [LBSPR](#), [LendingClub](#), [lifelogr](#), [liikioi](#), [linkspotter](#), [live](#), [livechatR](#), [Imeresampler](#), [LocFDRPois](#), [loggit](#), [longurl](#), [lookupTable](#), [loopr](#), [lpirfs](#), [lplyr](#), [lvnet](#), [M2SMF](#), [macleish](#), [MAGNAMWAR](#), [makeFlow](#), [malariaAtlas](#), [mapedit](#), [mapfuser](#), [mase](#), [mason](#), [MazamaSpatialUIs](#), [MazamaWebUIs](#), [mbrgraphic](#), [mdsr](#), [metcupapi](#), [melt](#), [mem](#), [memapp](#), [messaging](#), [metacoder](#), [MetaComp](#), [MetamapsDB](#), [metaplot](#), [metaviz](#), [metricTester](#), [mgrCviz](#), [mgrR](#), [MIAMaxent](#), [mice](#), [miciOmics](#), [MIBayesOpt](#), [mlbgameday](#), [mlVAR](#), [MLZ](#), [mnis](#), [Modelcharts](#), [modeldb](#), [modelgrid](#), [moder](#), [moderndive](#), [momentumHMM](#), [Momocs](#), [monkeylearn](#), [morse](#), [mosaicCore](#), [mousetrap](#), [mplot](#), [mrChmadness](#), [mrgsolve](#), [msscxtxta4r](#), [mtconnectR](#), [mudata2](#), [muHVT](#), [muir](#), [multistateutils](#), [mvMonitoring](#), [MXM](#), [myTAI](#), [nandb](#), [naniar](#), [nasadata](#), [ncdump](#), [ncmeta](#), [ndjson](#), [nesRdata](#), [NestedCategBayesImpute](#), [netSecurity](#), [NetworkExtinction](#), [networkreporting](#), [NetworkRiskMeasures](#), [neuropsychology](#), [neutralitytestr](#), [NFP](#), [NLMR](#), [nls.multistat](#), [nlmfem](#), [Nmisc](#), [noaaastorevents](#), [NOAAWeather](#), [nomisr](#), [nonmemica](#), [nos](#), [notifyfem](#), [NPC](#), [nscprepr](#), [nullabor](#), [observer](#), [oec](#), [olstr](#), [omu](#), [openadds](#), [openair](#), [opencape](#), [opendatR](#), [opensensmapr](#), [OptimClassifier](#), [OutliersO3](#), [PAC](#), [packagectrackr](#), [padr](#), [PakPC2017](#), [parlitools](#), [parsemsf](#), [parSim](#), [particles](#), [patrick](#), [patternplot](#), [pecc](#), [per](#), [peptider](#), [perccalc](#), [performanceEstimation](#), [Petfinder](#), [petrinetr](#), [PHEindicatormethods](#), [phenomap](#), [PhenotypeSimulator](#), [philentropy](#), [photobiology](#), [photobiologyInOut](#), [phylopath](#), [pivot](#), [pivottable](#), [pixidust](#), [pkgraph](#), [PKNCA](#), [PKPDmisc](#), [Plasmidprofiler](#), [plater](#), [platoetols](#), [pleiades](#), [plotly](#), [plotr](#), [pmatch](#), [pme](#), [PNAdeIBGE](#), [pointblank](#), [poio](#), [pollen](#), [pool](#), [pooling](#), [PopED](#), [poppr](#), [postal](#), [qpcsq](#), [Spatial](#), [PPIforest](#), [prcr](#), [prepdatt](#), [pRF](#), [priedunbrief](#), [processanimator](#), [processmapR](#), [processmonitr](#), [prophet](#), [propUBills](#), [prosltr](#), [prozor](#), [PSLM2015](#), [psychmeta](#), [psycho](#), [psychReport](#), [pستم](#), [purrury](#), [qdap](#), [qicharts2](#), [qqplotr](#), [qsc](#), [quadmesh](#), [quantable](#), [queuecomputer](#), [quickReg](#), [quokar](#), [qwraps2](#), [r2glm](#), [r4lineups](#), [r511](#), [radiantbasics](#), [radiant.desjgn](#), [radiant.model](#), [radiant.multivariate](#), [randomFactorExplainer](#), [rattle](#), [RBeST](#), [rbgm](#), [rison](#), [rccmisc](#), [rchess](#), [reicr](#), [RClickhouse](#), [rclimateR](#), [RCMIP5](#), [RColetum](#), [recongresso](#), [crossref](#), [RCrypto](#), [rev](#), [rdefra](#), [rdfp](#), [Rdrooms](#), [rdrop2](#), [readabs](#), [rebird](#), [reclin](#), [REDCapR](#), [RedditExtractorR](#), [ReddyProc](#), [refuge](#), [refund.shiny](#), [replyr](#), [reproducibile](#), [reرداد](#), [reReg](#), [rERR](#), [resumer](#), [revenge](#), [rfacebookstat](#), [rfishbase](#), [rfm](#), [rIPermute](#), [rho](#), [rhierbaps](#), [rhmmer](#), [Rilostat](#), [rLandsat](#), [rmapzen](#), [RmarineHeatWaves](#), [rmcfs](#), [RMCriteria](#), [rmwweather](#), [RNeXML](#), [RNHANES](#), [Rnighlights](#), [moaa](#), [roadoi](#), [roahd](#), [robis](#), [rollmatch](#), [rolypoly](#), [ropenaq](#), [ropercenter](#), [rpcdsearch](#), [rplos](#), [rPraat](#), [rPref](#), [rprev](#), [Rraven](#), [rrr](#), [rsample](#), [rscopos](#), [rscocorecard](#), [RSDA](#), [rsinaica](#), [rsoti](#), [rsplot](#), [rSQM](#), [RSSL](#), [RSwissMaps](#), [rtimes](#), [rtimicropem](#), [rtreac](#), [rtrends](#), [rubias](#), [ruler](#), [rusk](#), [rvrtnet](#), [rwalkr](#), [rwrnderground](#), [sabra](#), [saeSim](#), [salesforcer](#), [sambia](#), [sampler](#), [SanFranBeachWater](#), [SanzCrosos](#), [sars](#), [scandata](#), [scholar](#), [SCORPIUS](#), [SCPMF](#), [sealr](#), [sejplot2d](#), [sejmrR](#), [seplyr](#), [Seurat](#), [Sflect](#), [shazam](#), [shinyHeatmaply](#), [ShinyTester](#), [SIBER](#), [sicegar](#), [sidrar](#), [simglm](#), [simmerplot](#), [simPH](#), [SimplifyStats](#), [SimRVPedigree](#), [simTool](#), [SingleCaseES](#), [SIRtoGTFS](#), [sitar](#), [sjlabelled](#), [sjmisc](#), [sjPlot](#), [sjstats](#), [skimr](#), [skynet](#), [slackr](#), [solrium](#), [solvebio](#), [sophistsh](#), [sorvi](#), [SpaCCr](#), [SpaDES.core](#), [sparkvawr](#), [sparklyr](#), [SpatialBall](#), [SpatialEpiApp](#), [spbabel](#), [spellcheckr](#), [splithalf](#), [spotifyr](#), [svrr](#), [sv3sim](#), [Stack](#), [stability](#), [stacomaiR](#), [statar](#), [states](#), [statesRcontiguous](#), [statsDK](#), [statar](#), [staterights](#), [stormwindmodel](#), [stplran](#), [StratifiedRE](#), [STRMPs](#), [SubgrPlots](#), [suprnats](#), [sunburstR](#), [superheat](#), [surveydata](#), [survminer](#), [survsup](#), [survtime](#), [survutils](#), [SYMMaj](#), [sweep](#), [swmmr](#), [SWMPR](#), [SWMPRExtension](#), [syllabifyr](#), [syuzhet](#), [tabr](#), [tabularaster](#), [taxa](#), [taxizedb](#), [tbl2xts](#), [teachingApps](#), [telefit](#), [temperatureresponse](#), [tetraclasse](#), [textfeatures](#), [textmining](#), [textreus](#), [textstem](#), [theses](#), [thinkr](#), [tibbletime](#), [tidybayes](#), [tidyboot](#), [tidycensus](#), [tidygenomics](#), [tidygraph](#), [tidyhydat](#), [tidyimpute](#), [tidyLPA](#), [tidymodels](#), [tidyposterior](#), [tidypredict](#), [tidyquant](#), [tidyr](#), [tidyRSS](#), [tidystats](#), [tidystringdist](#), [tidytext](#), [tidytransit](#), [tidytree](#), [tidyverse](#), [tiger](#), [tigris](#), [timelineR](#), [timelinese](#), [timetk](#), [Tmisc](#), [togglr](#), [toxplot](#), [TrafficBDE](#), [tree.bins](#), [trellor](#), [trialr](#), [tribe](#), [tricolore](#), [tread](#), [TwoRegression](#), [uaparserjs](#), [ubi](#), [uber](#), [ukbtools](#), [uncmb](#), [understandBPMN](#), [unjoin](#), [unpivotr](#), [useful](#), [utiliPEA](#), [valr](#), [vcfr](#), [vdmR](#), [vip](#), [visdat](#), [votogram](#), [vpc](#), [vqtl](#), [waccR](#), [wafekfield](#), [walkalytics](#), [walker](#), [wallace](#), [walmartAPI](#), [wand](#), [weathercan](#), [webTRISr](#), [wec](#), [weibulltools](#), [wfindr](#), [whereport](#), [WHO](#), [widyr](#), [WikidataQueryServiceR](#), [windfarmGA](#), [woeR](#), [wordbank](#), [WordR](#), [worldmet](#), [wrangle](#), [WRDTSIdal](#), [Wufoor](#), [xesreadr](#), [XGR](#), [XKCDdata](#), [xmrr](#), [xpose](#), [xpose4](#), [xyr](#), [xttractomatic](#), [yardstick](#), [yorkr](#), [Zelig](#), [ZeligChoice](#), [ZeligEi](#), [zeligverse](#), [zFactor](#), [ZipRadius](#), [ztype](#)

Reverse suggests: [adaptMT](#), [afex](#), [agridat](#), [airGR](#), [ALA4R](#), [alluvial](#), [ameco](#), [archivist](#), [assertiveutils](#), [bannerCommenter](#), [BAS](#), [bayerGDS](#), [beezdemand](#), [bench](#), [BiDimRegression](#), [bigqueryr](#), [hillboard](#), [binford](#), [bisect](#), [bmlm](#), [bodenmiller](#), [bossMaps](#), [BSDA](#), [CAISER](#), [canvasXpress](#), [caret](#), [causaldrf](#), [cbsodataR](#), [checkr](#), [climbeR](#), [clustermq](#), [cna](#), [codemetar](#), [codingMatrices](#), [codyn](#), [comtradr](#), [cowplot](#), [ctmle](#), [cvequality](#), [cytofan](#), [DALEX](#), [dalmatian](#), [datamaps](#), [DataVisualizations](#), [DeclareDesign](#), [decoder](#), [deplyr](#), [DepthProc](#), [describer](#), [diffdf](#), [DirectEffects](#), [directlabels](#), [dirichletProcess](#), [EbayesThresh](#), [ecb](#), [ecotax](#), [edgarWebR](#), [epiphyr](#), [epitab](#), [europop](#), [eyelinker](#), [feather](#), [fiftyfater](#), [filestrings](#), [fishdata](#), [foghorn](#), [forwards](#), [fourierin](#), [fractional](#), [frailtyEML](#), [fredr](#), [FSelectorRcpp](#), [fuelconomy](#), [furniture](#), [furr](#), [gampinnder](#), [geex](#), [geoknife](#), [gestalt](#), [gedgar](#), [ggenealogy](#), [ggformula](#), [gginnards](#), [ggraph](#), [ggmap](#), [ggplot2](#), [ggRandomForests](#), [ggrides](#), [ggsatial](#), [ggswissmaps](#), [gthemes](#), [ggvoroioi](#), [glue](#), [googledrive](#), [graphframes](#), [grattan](#), [Greg](#), [growthcurver](#), [gscounts](#), [hdme](#), [hei](#), [highlightHTML](#), [hipread](#), [hrbrthemes](#), [htmlTable](#), [hutils](#), [huxtable](#), [hydrostats](#), [imager](#), [importar](#), [inlabur](#)

Correction:

The most recent version of all packages on CRAN (should) work together

Takeaway(s) #2

Think in terms of package cohorts.

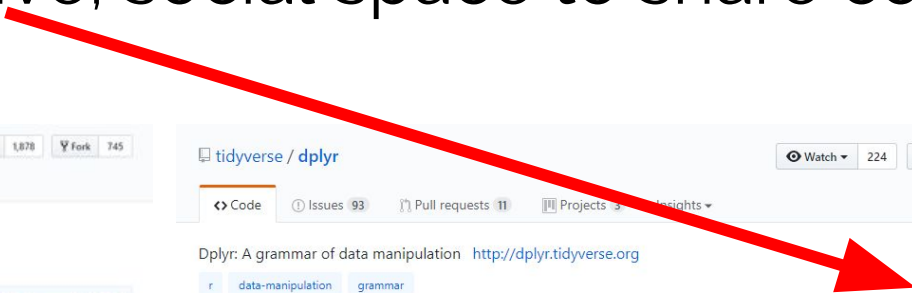
Avoid mismatch in package sets
over time



Bioconductor

OPEN SOURCE SOFTWARE FOR BIOINFORMATICS

Github – a collaborative, social space to share code



tidyverse / dplyr

Watch 224 Unstar 1,878 Fork 745

Code Issues 93 Pull requests 11 Projects 3 Insights

Branch: master

Commits on Jul 17, 2017

- Return error when distinct is used on unknown columns (#2867), (#2955) - fa36b50

Commits on Jul 15, 2017

- Reenable test (#2974) - bb40682

Commits on Jul 13, 2017

- Create Makevars on Travis for treating compilation warnings as errors (...)
- Depend on Rcpp >= 0.12.7 (#2914)
- Fix case_when() example (#2917)

Commits on Jun 23, 2017

- rename object "group_by" to "group_var" (#2901) - 4bb35fb

Commits on Jun 22, 2017

- Quality src_memdb usage - 1003354
- Use development version - 7037952

tidyverse / dplyr

Watch 224 Unstar 1,878 Fork 745

Code Issues 93 Pull requests 11 Projects 3 Insights

Dplyr: A grammar of data manipulation <http://dplyr.tidyverse.org>

r data-manipulation grammar

4,292 commits 24 branches 16 releases **131 contributors**

Branch: master New pull request Create new file Upload files Find file Sourcegraph Clone or download

foo-bar-baz-qux committed with hadley Return error when distinct is used on unknown columns (#2867), (#2955) Latest commit fa36b50 7 days ago

R	Return error when distinct is used on unknown columns (#2867), (#2955)	7 days ago
data-raw	Adds storms data set with documentation. (#2431)	5 months ago
data	Adds storms data set with documentation. (#2431)	5 months ago
docs	Update site	a month ago
inst	Bump bindrpp & glue versions	a month ago
man	Quality src_memdb usage	a month ago



github

GAME OF THRONES
ASCENT

```
9     rmarkdown,  
0     sf (>= 0.3-4),  
1     svglite (>= 1.2.0.9001)  
2 Remotes: hadley/scales,  
3     hadley/svglite,  
4     jimhester/withr,  
5     r-lib/rlang  
6 Enhances: sp
```

Upgrading packages in production

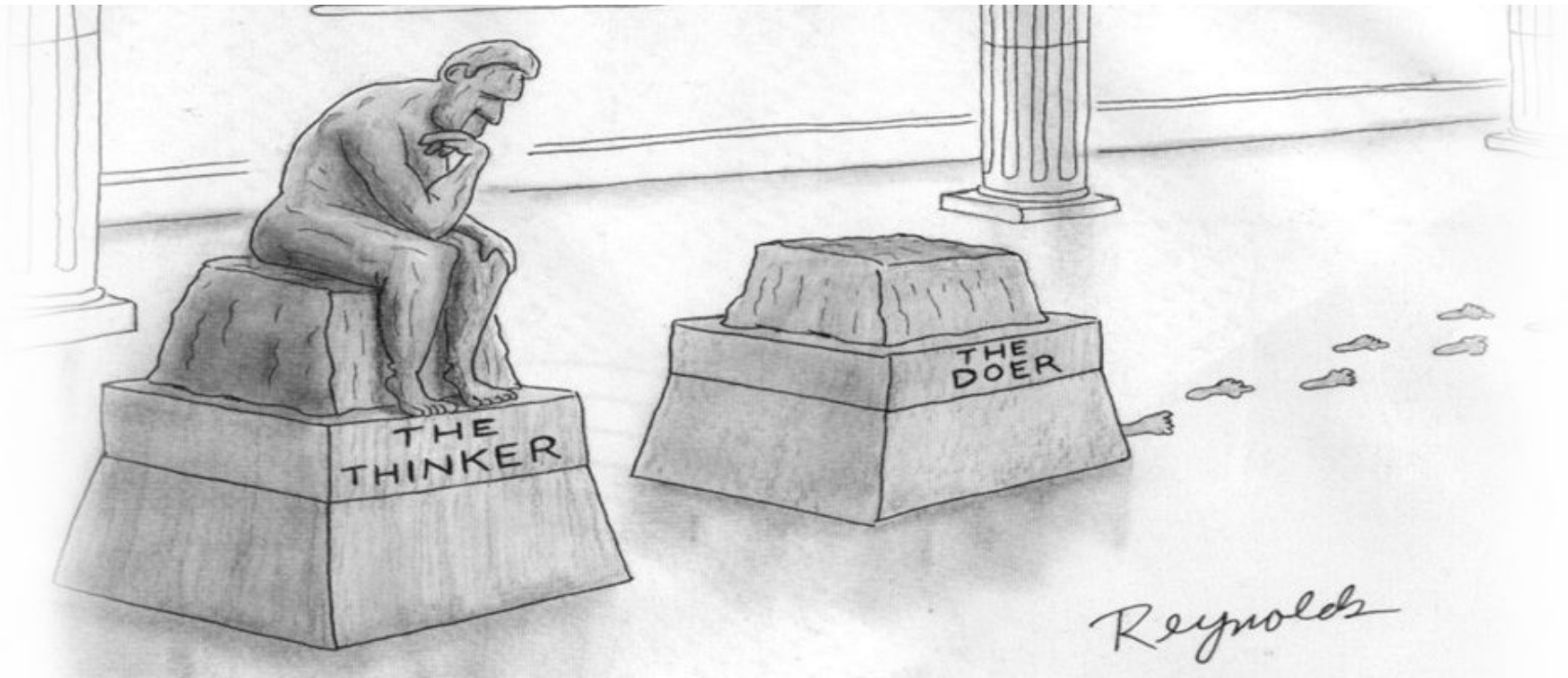


Takeaway(s) #3

When pulling in a "single" github package, identify what else will come in from outside CRAN

Takeaway #1

Think of the surface area change when adding/changing package(s)



Reynolds

<https://github.com/metrumresearchgroup/pkgcheck>

```
rstudio@8c913778e534:~/tarballs$ pkc check . --config=../crancheck.yml
INFO[0000] running check for package: tidyr
INFO[0000] running check for package: PKPDmisc
INFO[0000] running check for package: dplyr
INFO[0033] tidyr v0.8.1 CHECK RESULTS: 0 ERRORS, 0 WARNINGS, 1 NOTES
INFO[0033] tidyr v0.8.1 TEST RESULTS: 323 OK, 0 Skipped, 0 Failed
INFO[0048] PKPDmisc v2.1.1 CHECK RESULTS: 0 ERRORS, 0 WARNINGS, 1 NOTES
INFO[0048] PKPDmisc v2.1.1 TEST RESULTS: 48 OK, 0 Skipped, 0 Failed
INFO[0210] dplyr v0.7.5 CHECK RESULTS: 0 ERRORS, 0 WARNINGS, 2 NOTES
INFO[0210] dplyr v0.7.5 TEST RESULTS: 2733 OK, 6 Skipped, 0 Failed
INFO[0210] running on 8 threads took 3m30.048510975s
```

Takeaway #3

check compatibility and track full
dependency trees

Cohort management

```
packrat
...
Package: hms
Source: CRAN
Version: 0.4.2
Hash: b4096a4f6a6736138e9a825c2baaacf0
Requires: pkgconfig, rlang

Package: htmltools
Source: CRAN
Version: 0.3.6
Hash: b24df7ea0856eab6618f6a56016d940d
Requires: Rcpp, digest

Package: htmlwidgets
Source: CRAN
Version: 1.2
Hash: de18b75f31630089b22e30d4b188cfbe
Requires: htmltools, jsonlite, yaml
...
```

- switchr
- jetpack
- packrat
- containerit

Tooling evolution - Cohort generation builds on **r-lib/pkgdepends** (very experimental)

```
1 gen_runtime_description(  
2   c("dplyr",  
3     "ggplot2",  
4     "flexdashboard",  
5     "purrr",  
6     "sparklyr (>= 0.7.0-9020)",  
7     "pool (>= 0.1.4)"),  
8   github = c("rstudio/pool", "rstudio/sparklyr")  
9 )
```

Takeaway #4

consider building cohorts
immutably, check compat, then use
lockfiles to create “production”
environments

How to
Move
Fast(er)?



Invest in training and process improvement

HOW TO MAKE A GOOD CODE REVIEW



***RULE 1: TRY TO FIND
AT LEAST SOMETHING
POSITIVE***

Source: Geek&Poke Comics

Take Advantage of Tools and Add-ons

- usethis
- datapasta
- remedy
- sinew
- covr
- custom scaffolding functions

use_package("MASS", "Suggests")

```
#> ✓ Adding 'MASS' to Suggests field in DESCRIPTION
#> • Use `requireNamespace("MASS", quietly = TRUE)` to test if package is installed
#> • Then use `MASS::fun()` to refer to functions.
```

use_dev_package("callr")

```
#> ✓ Adding 'callr' to Imports field in DESCRIPTION
#> ✓ Adding 'r-lib/callr' to Remotes field in DESCRIPTION
```

use_roxygen_md()

```
#> ✓ Setting Roxygen field in DESCRIPTION to 'list(markdown = TRUE)'
#> ✓ Setting RoxygenNote field in DESCRIPTION to '6.1.0'
#> • Run `devtools::document()`
```

use_rcpp()

```
#> ✓ Adding 'Rcpp' to LinkingTo field in DESCRIPTION
#> ✓ Adding 'Rcpp' to Imports field in DESCRIPTION
#> ✓ Creating 'src/'
#> ✓ Adding '*.o', '*.so', '*.dll' to 'src/.gitignore'
#> • Include the following roxygen tags somewhere in your package
#> #' @useDynLib mypkg, .registration = TRUE
#> #' @importFrom Rcpp sourceCpp
#> • Run `devtools::document()`
```

```
library(ggplot2)
library(rlang)
my_awesome_plot <- function(df, x, y) {
  xvar <- enquo(x)
  yvar <- enquo(y)
  ggplot(df, aes(!!xvar, !!yvar)) +
    geom_point()
}
```

```
> sinew::pretty_namespace("example_plot.R")
```

```
functions changed in 'example_plot.R':
```

```
base::library      (line: 1 cols: [01-07])
base::library      (line: 2 cols: [01-07])
dplyr::enquo       (line: 7 cols: [11-15])
dplyr::enquo       (line: 8 cols: [11-15])
ggplot2::ggplot    (line: 9 cols: [03-08])
ggplot2::aes       (line: 9 cols: [14-16])
ggplot2::geom_point (line: 9 cols: [37-46])
```

```
library(ggplot2)
library(rlang)
```

```
my_awesome_plot <- function(df, x, y) {
  xvar <- dplyr::enquo(x)
  yvar <- dplyr::enquo(y)
  ggplot2::ggplot(df, ggplot2::aes(!!xvar, !!yvar)) + ggplot2::geom_point()
}
```

Optimal Organizational Efficiency

Automate Automate Automate
Embrace Continual Deployment

Standardize logging and monitoring solutions

Provide tools to automate rote tasks
Incorporate Code Reviews and Retrospectives
Continuously Integrate versioned code

Utilize (modern) version control platform
Encourage testing within user-defined code

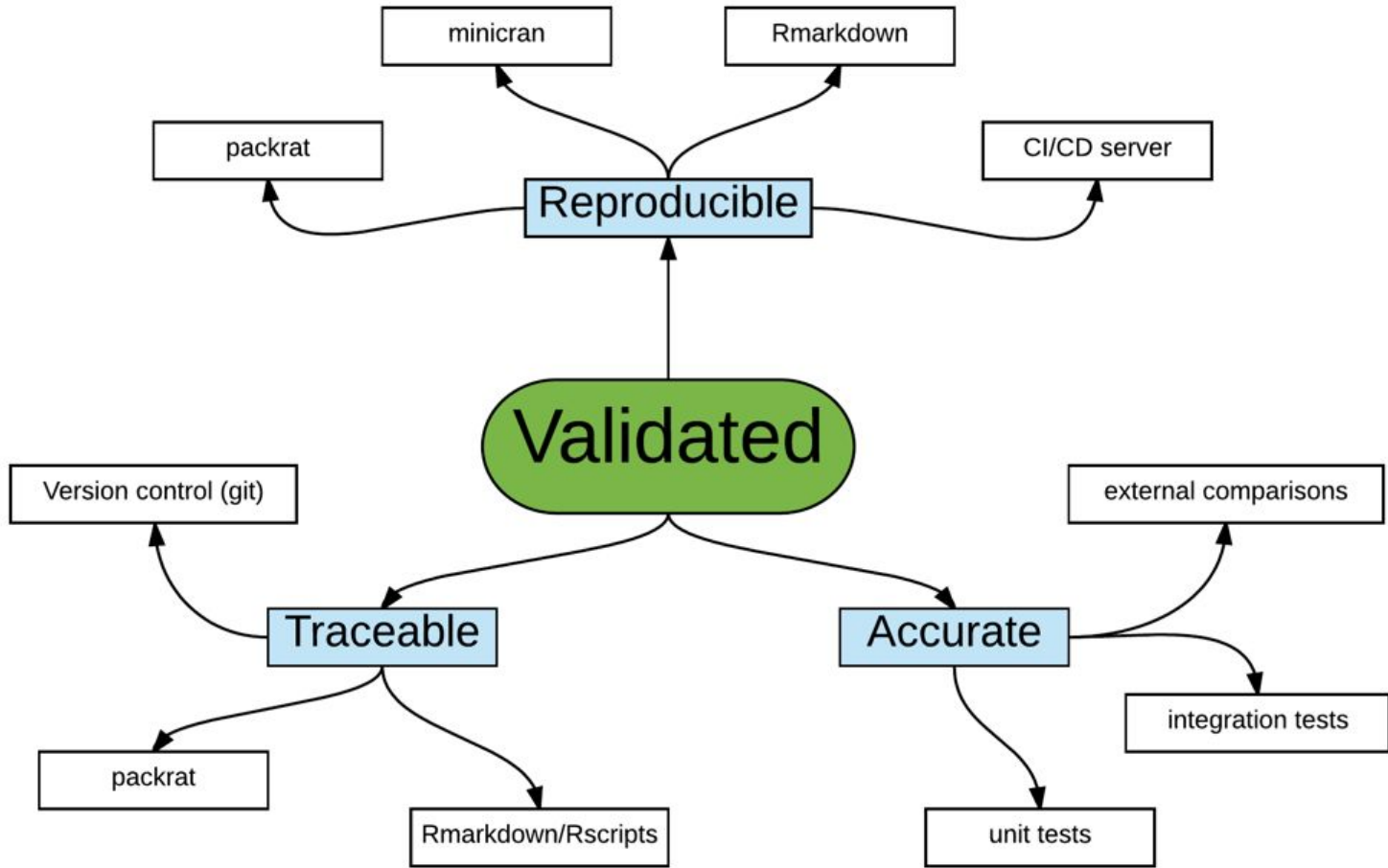
Define package management strategies
Move scripts to packages, use tests

devinp@metrumrg.com

@dpastoor on **github**

@devinpastoor on **twitter**

backup



Package (version) Assessment Checklist

- **What is the package needed for?** Upgrading an inflight project vs new project.
- **Where is the package coming from?**
 - If not from CRAN, how much new development has been done?
 - What is the additional packaging surface area? (new dependencies)
 - Are there any new and/or remote dependencies?
- **What does the package do?**
 - Methodology? Data manipulation?
 - How easy will it be to tell if the package is not accurate?
- **What is the package pedigree?**
 - Who created it?
 - How active/responsive are they?
 - Have they communicated future plans about features/maintenance?
- **What checks are in place** to prevent regressions and demonstrate the package will continue to do what it says it does?
 - Tests
 - Community Engagement